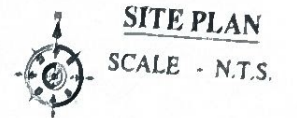


SITE PLAN

SITE PLAN CONST. OF H.L. BRIDGE ACROSS BANKI RIVER ON SONPUR KALA AMBIKAPUR MUKTIDHAAM ROAD,



TBM TABLE	
TBM 1	100.000
TBM 2	98.423
TBM 3	99.378
TBM 4	103.108
TBM 5	103.023



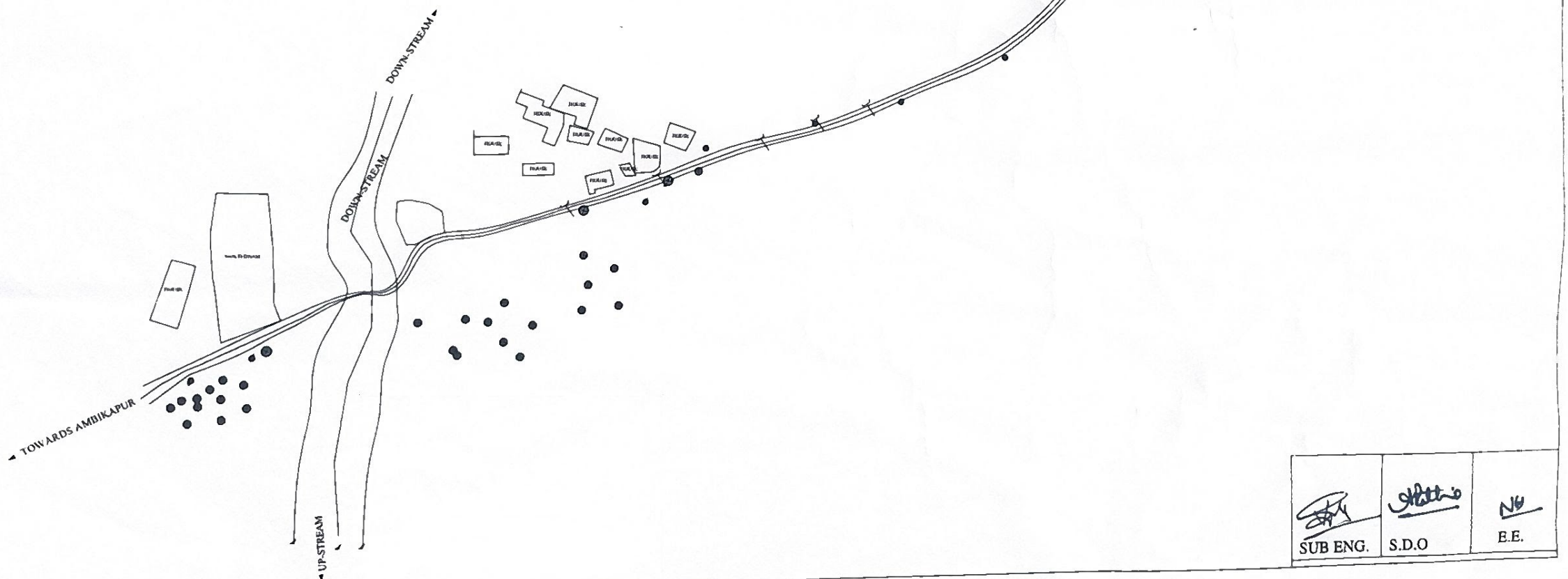
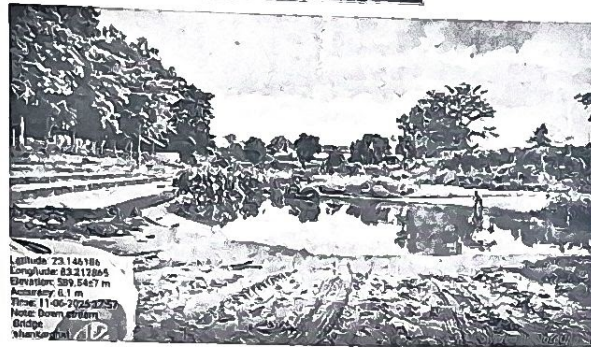
GEO LOCATION:
23°08'46.2"N
83°12'46.8"E

BEARING OF RIVER D/S SIDE		
LINE BEARING	DISTANCE	WIDTH OF RIVER
OD1 124° 00'	32.00 M.	24.00 M.
D1D2 131° 00'	25.00 M.	8.000 M.
O2D3 131° 00'	25.00 M.	6.200 M.
D3D4 122° 30'	50.00 M.	8.000 M.
D4D5 181° 00'	25.00 M.	5.000 M.
O5D6 185° 00'	50.00 M.	7.500 M.
D6D7 205° 00'	25.00 M.	5.500 M.

BEARING OF RIVER U/S SIDE		
LINE BEARING	DISTANCE	WIDTH OF RIVER
OUI 44° 00'	18.00 M.	10.00 M.
UIU2 53° 30'	50.00 M.	8.200 M.
U2U3 16° 30'	50.00 M.	7.600 M.
O3U4 10° 30'	25.00 M.	8.500 M.
UIU2 43° 00'	50.00 M.	9.100 M.
U2U3 31° 00'	25.00 M.	10.200 M.

BEARING OF EXISTING ROAD AMBIKAPUR SIDE		
LINE BEARING	DISTANCE	
A'O 231° 00'	50.00 m.	
OA 215° 00'	50.00 m.	
AB 238° 00'	75.00 m.	
BC 225° 30'	50.00 m.	CD 214°
07 25.00 m	DE 220° 00'	25.00 m
EF 224° 00'	25.00 m.	
FG 273° 00'	50.00 m.	

BEARING OF EXISTING ROAD ON RAJOURI ROAD SIDE		
LINE BEARING	DISTANCE	
OA' 51° 00'	30.00 m.	
A'B' 70° 00'	25.00 m.	
B'C' 73° 00'	50.00 m.	
C'D' 105° 00'	50.00 m.	
D'E' 126° 00'	75.00 m.	



SUB ENG.	S.D.O.	E.E.